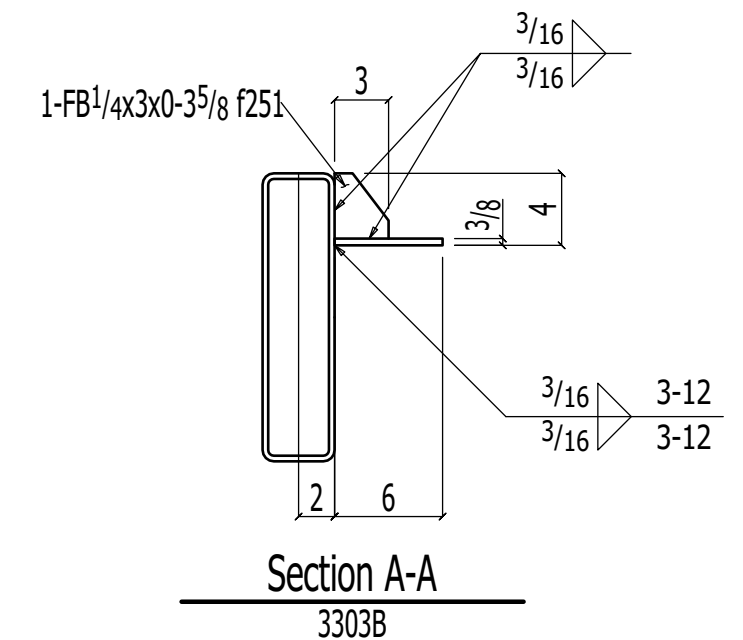
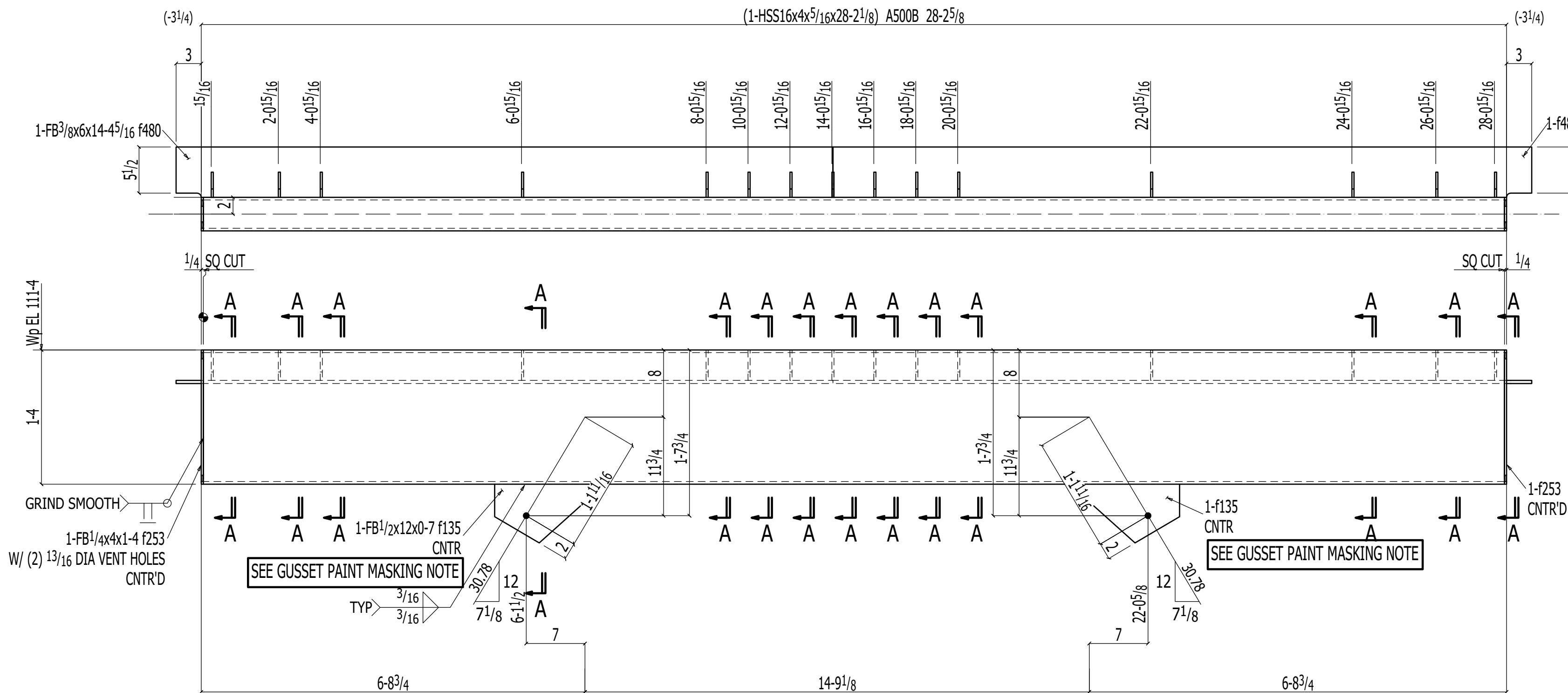


BILL OF MATERIAL

SHIPPING Mark	NO. PCS	MATERIAL	LENGTH	ASSEM. MARK	STEEL GRADE	REMARKS	FIN	WEIGHT TOTAL
3303B	ONE	BEAM					GALV	1390
	1	HSS16x4x5/16	28 2 1/8	3303B	A500B	S2E		1137
	2	FB 1/2x12	0 7	f135	A36			16
	2	FB 3/8x6	14 4 5/16	f480	A36			220
	2	FB 1/4x4	1 4	f253	A36			9
	15	FB 1/4x3	0 3 5/8	f251	A36			9

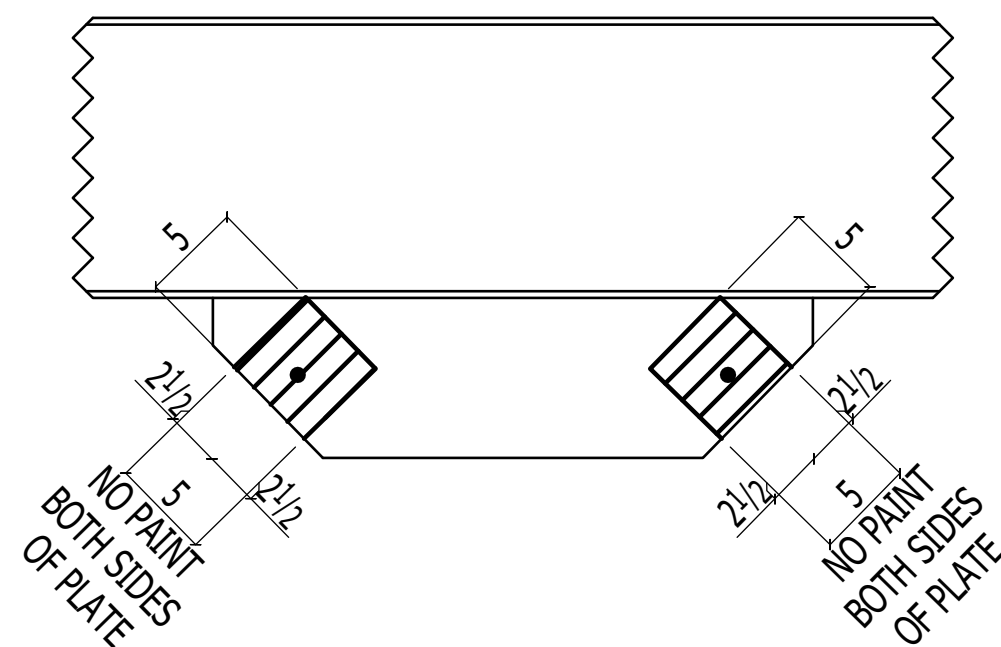


ONE BEAM 3303B

SHOP NOTE:
 1. GALVANIZED
 2. PROVIDE ADDITIONAL VENT HOLES AS REQ'D



REV	DATE	DESCRIPTION
0	Jun 30 2023	RELEASED FOR FAB



TYPICAL GUSSET PAINT MASKING



1512 Old US Highway 40 East
Columbia, Missouri 65202

PHONE: (573) 449-9177
FAX: (573) 449-7177

DESCRIPTION:	BEAM	CLEANING:	SSPC-SP2	SHOP PAINT:	GALVANIZED
DRAWN BY:	AJB	WELDING:	E70xx	MIL THCKNS:	N/A
CHECKED BY:	JAM	REFERENCE:	E300-SERIES	ALL HOLES:	1 3/16 DIA U.N.O.
PROJECT:	CITY OF WENTZVILLE, PUBLIC WORKS FACILITY				
LOCATION:	WENTZVILLE, MO				
CUSTOMER:	LAYNECO CONSTRUCTION				
JOB NUMBER:	2311	DRAWING NO. :	3303		

RELEASED FOR FABRICATION